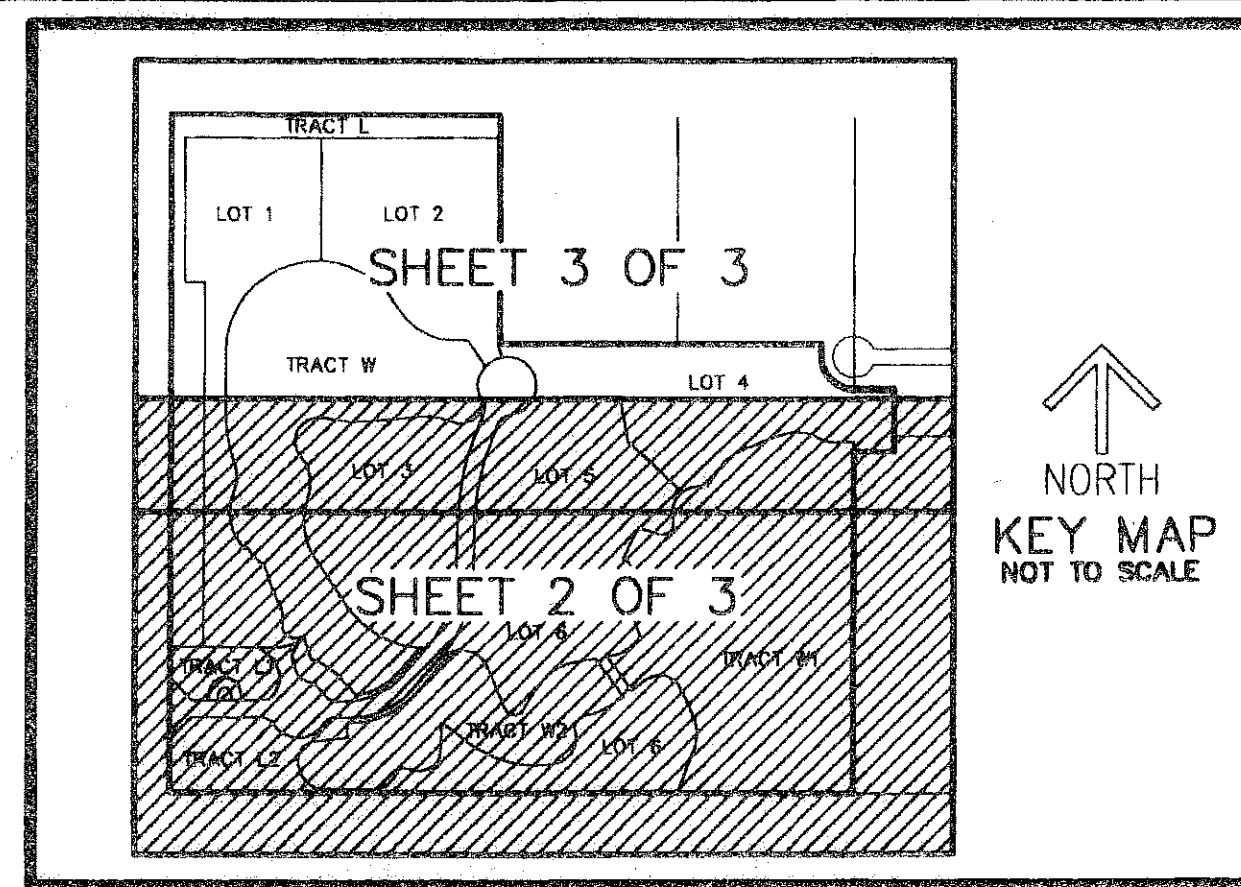
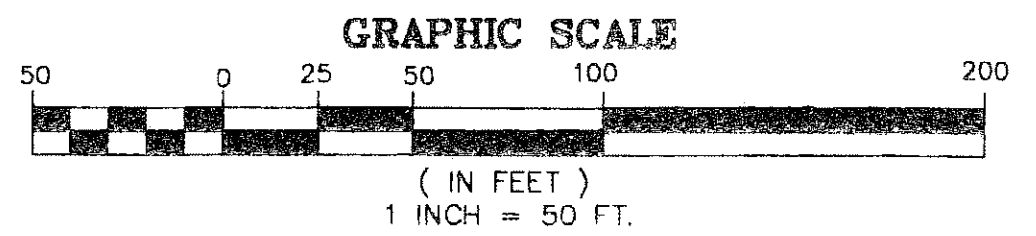


GRANDE VISTA LAKES

BEING A REPLAT OF A PORTION OF BLOCK 71, "PALM BEACH FARMS COMPANY PLAT NO. 3" AS RECORDED IN PLAT BOOK 2, PAGES 45 THROUGH 54, OF THE PUBLIC RECORDS OF PALM BEACH COUNTY, FLORIDA LYING IN SECTION 32, TOWNSHIP 46 SOUTH, RANGE 42 EAST, PALM BEACH COUNTY, FLORIDA

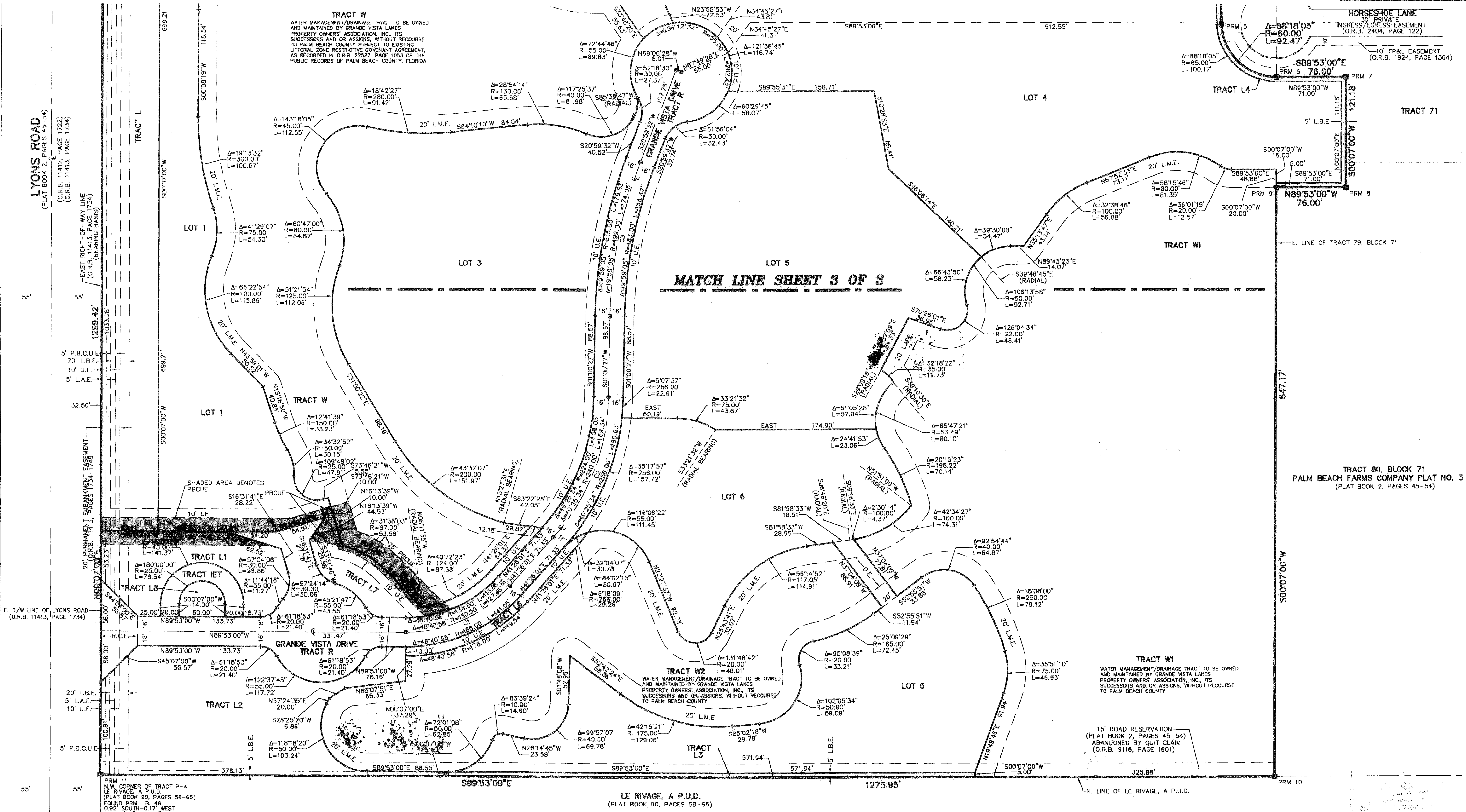
THIS INSTRUMENT PREPARED BY
DAVID P. LINDLEY
OF
CAULFIELD and WHEELER, INC.
SURVEYORS - ENGINEERS - PLANNERS
7301-A WEST PALMETTO PARK ROAD, SUITE 100A
BOCA RATON, FLORIDA 33433 - (561)392-1991
MARCH - 2005
SHEET 2 OF 3

NOTES
COORDINATES, BEARINGS AND DISTANCES
COORDINATES SHOWN ARE GRID
DATUM = NAD 83 1990 ADJUSTMENT
ZONE = FLORIDA EAST
LINEAR UNIT = US SURVEY FEET
COORDINATE SYSTEM 1983 STATE PLANE
TRANSVERSE MERCATOR PROJECTION
ALL DISTANCES ARE GROUND
SCALE FACTOR = 1.0000224
GROUND DISTANCE X SCALE FACTOR = GRID DISTANCE
BEARINGS AS SHOWN HEREON ARE GRID DATUM, NAD 83 1990
ADJUSTMENT, FLORIDA EAST ZONE
COORDINATES SHOWN ON THE CONTROL P.R.M.S MEET OR
EXCEED THE LOCAL ACCURACY REQUIREMENTS OF A 2
CENTIMETER GEODETIC CONTROL SURVEY.



STATE OF FLORIDA
COUNTY OF PALM BEACH
THIS PLAT WAS FILED FOR
RECORD AT _____ M.
THIS _____ DAY OF _____
A.D. 2005 AND DULY RECORDED
IN PLAT BOOK _____ ON
PAGES _____ AND _____
SHARON R. BOCK
CLERK AND COMPTROLLER
BY: _____
DEPUTY CLERK

164



LYONS ROAD
(PLAT BOOK 2, PAGES 45-54)
(O.R.B. 11412, PAGE 1722)
(O.R.B. 11413, PAGE 1734)

EAST RIGHT-OF-WAY LINE
(O.R.B. 11413, PAGE 1734)
(BEARING 90°00'00" W)

20' PERMANENT EMBANKMENT
(O.R.B. 11413, PAGES 1734-1748)

E. R/W LINE OF LYONS ROAD
(O.R.B. 11413, PAGE 1734)

PRM 11
N.W. CORNER OF TRACT P-4
LE RIVAGE, A P.U.D.
(PLAT BOOK 90, PAGES 58-65)
FOUND PRM L.B. 48
0.92' SOUTH - 0.17' WEST
(S10°35'08" W 0.94')

LE RIVAGE, A P.U.D.
(PLAT BOOK 90, PAGES 58-65)

TRACT 80, BLOCK 71
PALM BEACH FARMS COMPANY PLAT NO. 3
(PLAT BOOK 2, PAGES 45-54)

TRACT W1
WATER MANAGEMENT/DRAINAGE TRACT TO BE OWNED
AND MAINTAINED BY GRANDE VISTA LAKES
PROPERTY OWNERS' ASSOCIATION, INC. ITS
SUCCESSORS AND OR ASSIGNS, WITHOUT RECOURSE
TO PALM BEACH COUNTY

TRACT W2
WATER MANAGEMENT/DRAINAGE TRACT TO BE OWNED
AND MAINTAINED BY GRANDE VISTA LAKES
PROPERTY OWNERS' ASSOCIATION, INC. ITS
SUCCESSORS AND OR ASSIGNS, WITHOUT RECOURSE
TO PALM BEACH COUNTY

TRACT W
WATER MANAGEMENT/DRAINAGE TRACT TO BE OWNED
AND MAINTAINED BY GRANDE VISTA LAKES
PROPERTY OWNERS' ASSOCIATION, INC. ITS
SUCCESSORS AND OR ASSIGNS, WITHOUT RECOURSE
TO PALM BEACH COUNTY SUBJECT TO EXISTING
LITORAL ZONE RESTRICTIVE COVENANT AGREEMENT,
AS RECORDED IN O.R.B. 22927, PAGE 1053 OF THE
PUBLIC RECORDS OF PALM BEACH COUNTY, FLORIDA

HORSESHOE LANE
30' PRIVATE
INGRESS/EGRESS EASEMENT
(O.R.B. 2404, PAGE 122)
10' FP&L EASEMENT
(O.R.B. 1924, PAGE 1364)

TRACT L4
TRACT W1
TRACT 71

MATCH LINE SHEET 3 OF 3

E. LINE OF TRACT 79, BLOCK 71

N. LINE OF LE RIVAGE, A P.U.D.